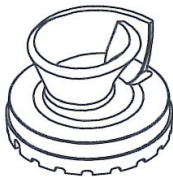


FM 160-210-310



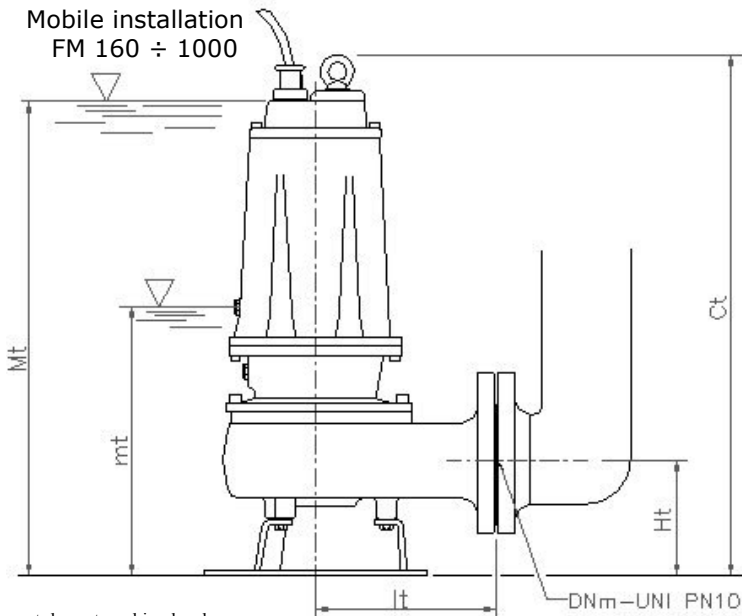
FM 550-1000 T

Free passage:
 50 mm (FM 160-210-310)
 45 mm (FM 550 T)
 50 mm (FM 1000 T)

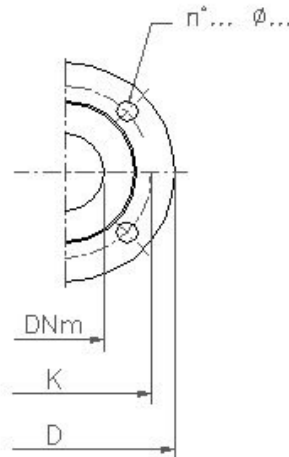
COMPONENTS	MATERIALS
Motor housing, hydraulic part	Grey cast iron
Shaft (pump side)	Stainless steel
Motor side mechanical seal	Carbon - ceramic
Pump side mechanical seal	Silicon carbide
Bolts	A2 stainless steel
Foot support	Galvanize iron
Gaskets (O-Ring)	NBR rubber

CHARACTERISTICS	
Electric motor	Asynchronous, oil immersed
Liquid temperature	0 - 40 °C
Insulation Class	F
Protection	IP 68
Cable	10 m. - H07 RNF

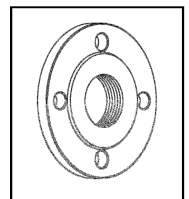
Mobile installation
 FM 160 ÷ 1000



mt: lowest working level
 Mt: lowest level for continuous duty



ACCESSORIES:
 Counterflange

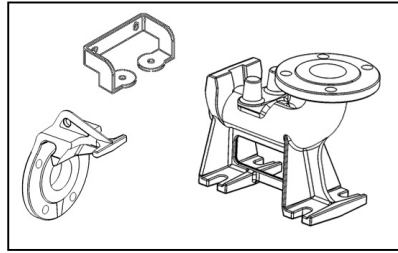


Depth of immersion:
 Max 20 m

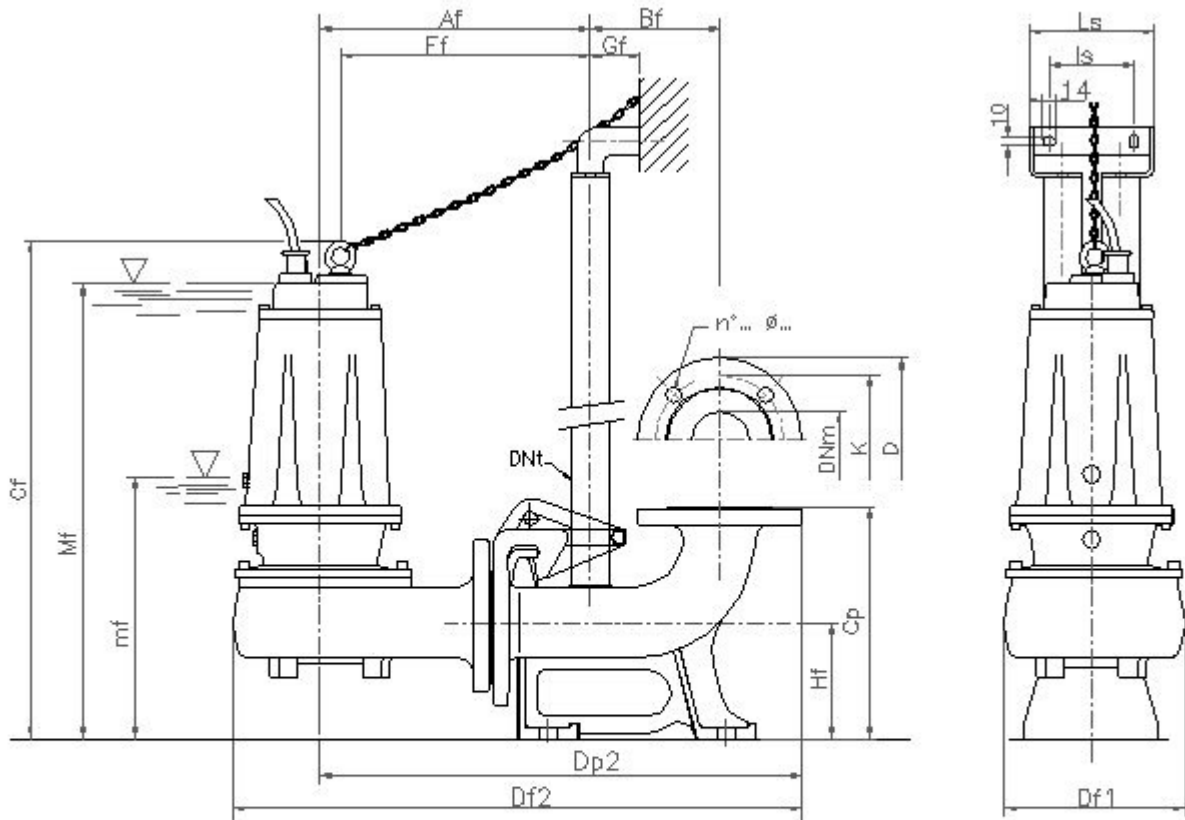
TYPE	DIMENSIONS (mm)						Flange UNI PN 10			Weight Kg
	Ct	Ø Dt1	Ht	It	mt	Mt	DNm	K	D	
FM 160 T	551	308	123	191	243	513	65	145	185	39
FM 160 - FM 210 T	551	308	123	191	243	513	65	145	185	40
FM 210 - FM 310 T	551	308	123	192	243	513	65	145	185	41
FM 550 T	645	370	148	210	285	600	80	160	200	69
FM 1000 T	725	170	178	232	358	670	80	160	200	93

ACCESSORIES:

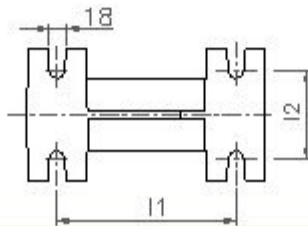
Quick coupling kit



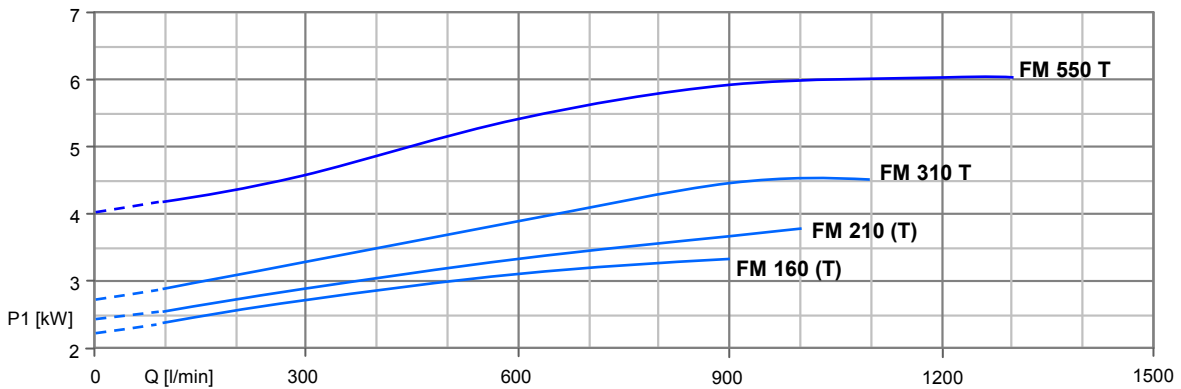
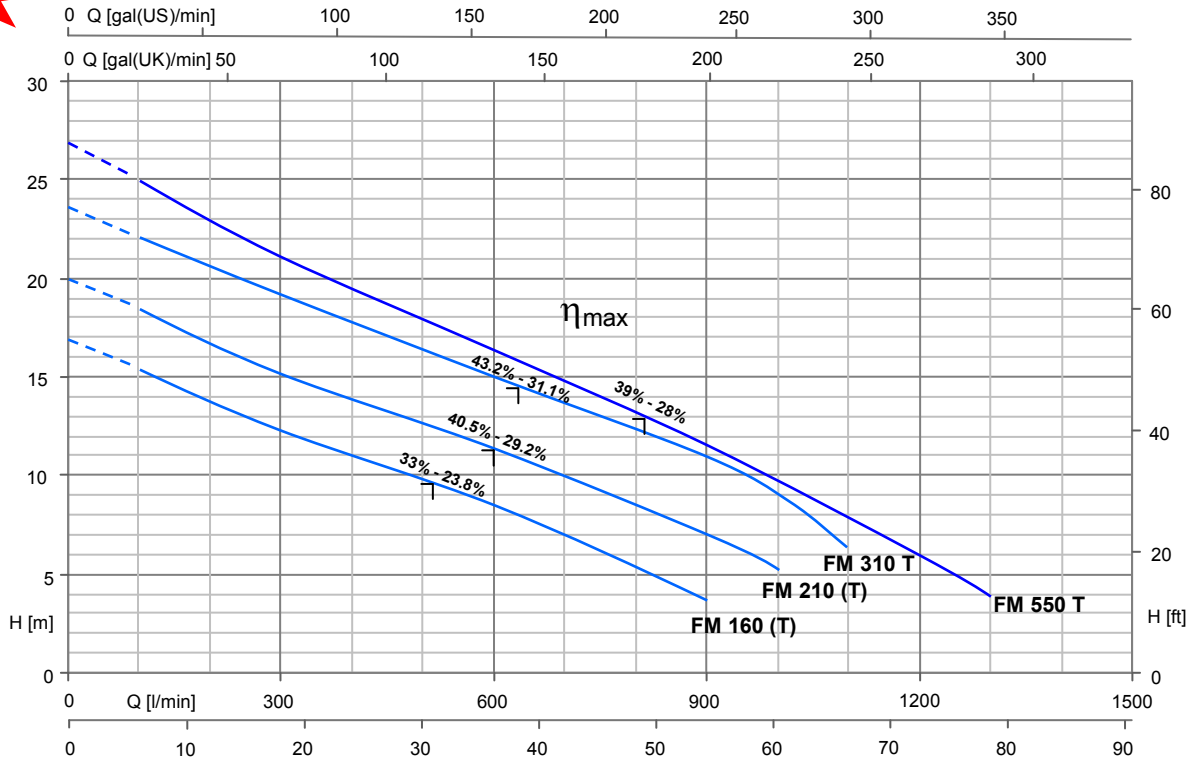
Fixed installation with quick coupling kit
FM 160 ÷ 1000/ P



mf: lowest working level
Mf: lowest level for continuous duty

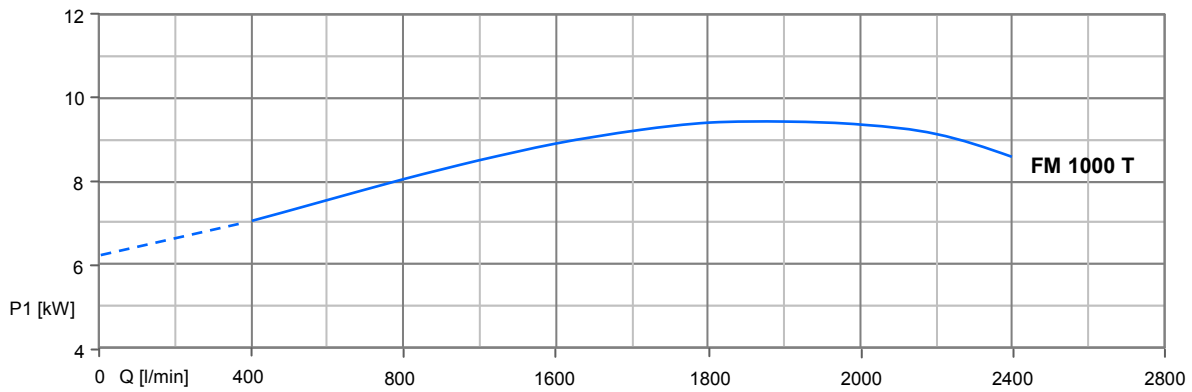
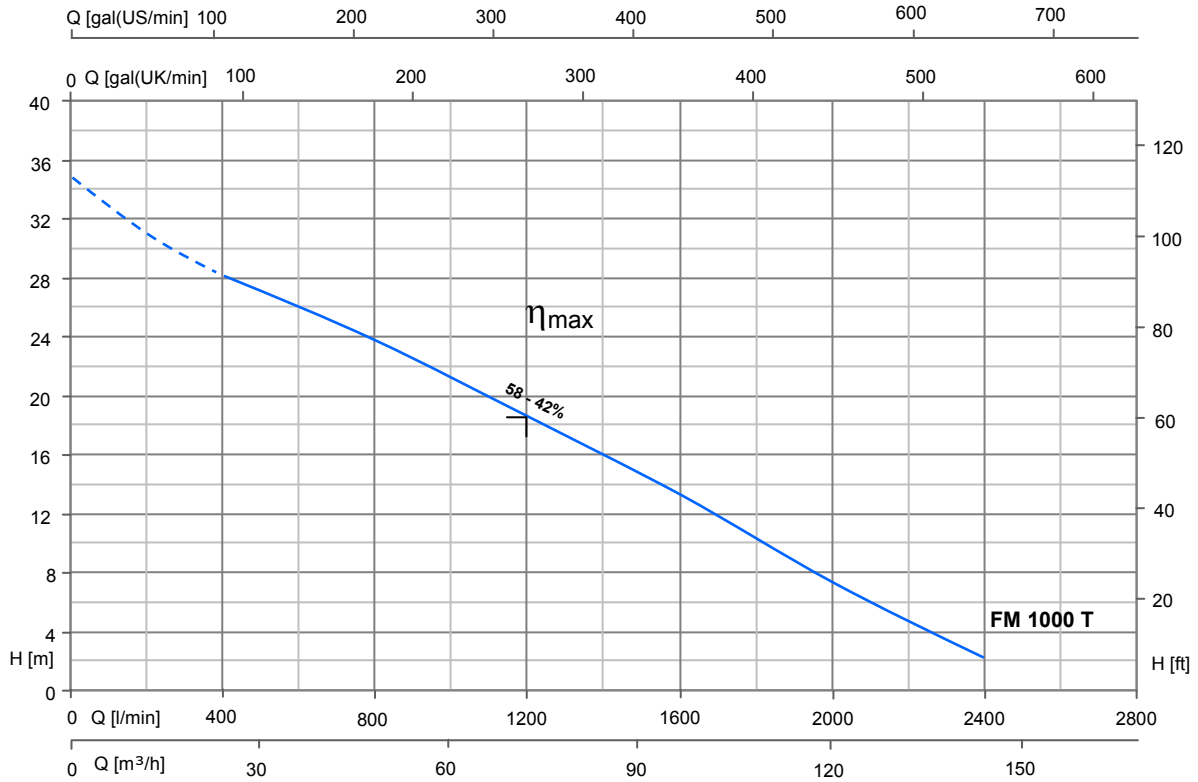


TYPE	DIMENSIONS (mm)																Flange UNI PN 10			
	Af	Bf	Cf	Cp	Df1	Df2	Dp2	Dnt	Ef	Gf	Hf	l1	l2	ls	ls	mf	Mf	DNm	K	D
FM 160/P T	303	145	560	260	200	639	327.5	1" 1/4	280	55	130	200	100	95	140	251	521	65	145	185
FM 160 - FM 210/P T	303	145	560	260	200	639	327.5	1" 1/4	280	55	130	200	100	95	140	251	521	65	145	185
FM 210 - FM 310/P T	303	145	560	260	200	639	327.5	1" 1/4	280	55	130	200	100	95	140	251	521	65	145	185
FM 550/P T	350	165	690	340	220	720	615	2"	319	85	190	250	140	130	180	327	642	80	160	200
FM 1000/P T	370	165	745	340	240	750	635	2"	350	85	190	250	140	130	180	380	690	80	160	200



TYPE		P ₂		P ₁ (kW)		AMPERE		Q (m ³ /h – l/min)												
1 ~	3 ~					1~	3~	0	6	12	18	24	30	36	42	48	54	60	66	78
230 V – 50 Hz	3 x 400 V – 50 Hz	(HP)	(kW)	1~	3~	1X230V 50Hz	3X400V 50Hz	H (m)												
FM 160	FM 160 T	1.5	1.1	2,8	2,6	12.5	4.4	17,0	15,3	13,8	12,3	11,0	9,8	8,4	7,1	5,5	3,8	-	-	-
FM 210	FM 210 T	2	1.5	3,3	3,1	15	5.5	19,9	18,4	16,7	15,2	13,8	12,4	11,3	10,1	8,6	7,0	5,2	-	-
-	FM 310 T	3	2.2	-	4,1	-	6.9	23,9	22,2	20,6	19,1	17,8	16,3	15,0	13,8	12,3	10,9	9,1	6,4	-
-	FM 550 T	5.5	4	-	5,6	-	10	27,0	24,9	23,0	21,1	19,5	17,8	16,3	14,7	13,0	11,5	9,8	7,9	4,0

∟ : η_{max} Max hydraulic efficiency and respective total efficiency



TYPE	P ₂		P ₁ (kW)	A	Q (m ³ /h - l/min)												
					0	12	24	36	48	60	72	84	96	108	120	132	144
3 ~	(HP)	(kW)	3~	3X400V 50Hz	0	200	400	600	800	1000	1200	1400	1600	1800	2000	2200	2400
400 / 690 V - 50 Hz					H (m)												
FM 1000 T	10	7.5	9,6	16.3	34.9	30.9	28.3	26.1	23.7	21.3	18.7	16.1	13.2	10.2	7.4	4.6	2.1

⌋ : η_{max} Max hydraulic efficiency and respective total efficiency